

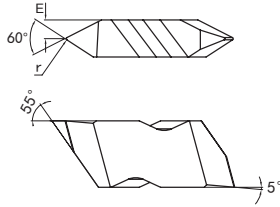
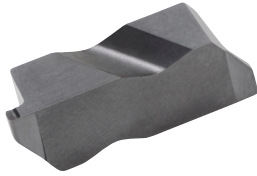
The background of the page features several technical diagrams of notched inserts. At the top left, a diagram shows a notched insert with a 55-degree angle and a 5-degree chamfer. Below it, a larger diagram shows an insert with dimensions W, H, and a 5-degree chamfer. To the right, a large, detailed diagram shows a notched insert with a 55-degree angle. At the bottom left, another diagram shows an insert with a 55-degree angle and a chamfer labeled 'E'.

STANDARD NOTCH INSERTS FOR GROOVING AND THREADING

High performance, cost-effective tools for grooving and threading in a wide range of materials. Fully interchangeable with other Notch-style inserts.

NOTCH GROOVING INSERTS

GNGP



Precision ground, positive rake Notch inserts for a wide range of grooving applications.

5° positive rake for improved cutting action and reduced cutting forces.

CATALOG NUMBER		INSERT SIZE	DIMENSIONS (INCH)			CUTTING DATA (INCH)		P	M	K
			W	T	r	depth of cut, a_p	feed per rev, f_n	MULTI-MATERIAL GM3125		
RIGHT HAND	LEFT HAND									
GNGP 2031R	GNGP 2031L	2	.031	.050	.004	max .050	.001-.005	★		
GNGP 2047R	GNGP 2047L	2	.047	.050	.004	max .050	.001-.005	★		
GNGP 2062R	GNGP 2062L	2	.062	.110	.008	max .110	.001-.006	★		
GNGP 2078R	GNGP 2078L	2	.078	.110	.008	max .110	.002-.008	★		
GNGP 2094R	GNGP 2094L	2	.094	.110	.008	max .110	.002-.008	★		
GNGP 2125R	GNGP 2125L	2	.125	.110	.008	max .110	.003-.010	★		
GNGP 3031R	GNGP 3031L	3	.031	.050	.004	max .050	.001-.005	★		
GNGP 3047R	GNGP 3047L	3	.047	.075	.008	max .075	.001-.006	★		
GNGP 3062R	GNGP 3062L	3	.062	.094	.008	max .094	.001-.006	★		
GNGP 3078R	GNGP 3078L	3	.078	.094	.008	max .094	.002-.008	★		
GNGP 3094R	GNGP 3094L	3	.094	.150	.008	max .150	.002-.008	★		
GNGP 3125R	GNGP 3125L	3	.125	.150	.008	max .150	.003-.010	★		
GNGP 3189R	GNGP 3189L	3	.189	.150	.023	max .150	.003-.010	★		

Ordering Example: 20 pcs GNGP 3189R GM3125

NOTE: Right-hand insert shown; Left-hand mirror image.

INSERT COMPATIBILITY

Notch GNGP grooving inserts are interchangeable with other Notch grooving inserts, and also fit tools using the following insert types:

NG, NGP, NG-K

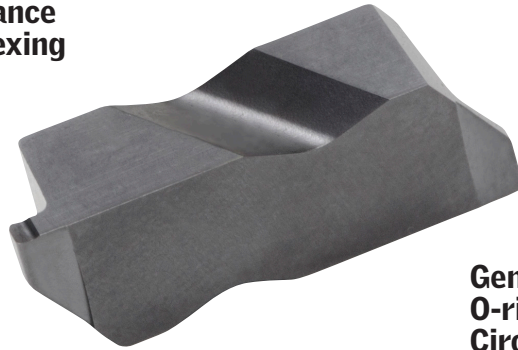
FLG, FLGP, FLG-CB

TLG, TLGP

NOTCH GROOVING AND THREADING INSERTS

STANDARD NOTCH INSERTS

Precision ground
for high performance
and accurate indexing

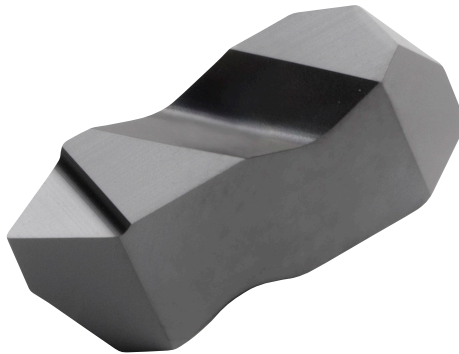


5° positive rake for
reduced cutting forces

General purpose grooving,
O-ring grooves,
Circlip grooves

Specialized edge treatment
for extended tool life

60° partial profile
V-thread forms
for a range
of thread pitches



2 cutting edges
per insert
for economy

TechMet