

**NEW!**

# STAINLESS STEEL TURNING SOLUTIONS



## Complete Grade Profile for Turning Stainless Steels

- Optimized range of premium carbide substrates
- Latest generation CVD and PVD coatings

**M**  
Stainless  
Steel

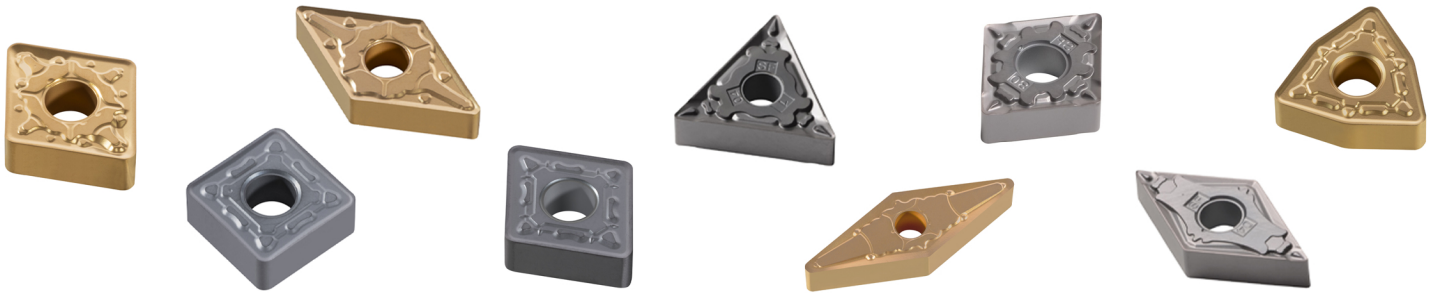
ISO	Grade Designation	Coating Type	Application
<b>M</b> Stainless Steel	<b>GM1115</b>	<b>CVD</b>	Best suited for stable conditions and high cutting speed applications. Outstanding wear resistance and coating adhesion properties. Post-coating treatment provides smoother cutting zone interface for reduced built-up edge and longer tool life.
	<b>GM1125</b>	<b>CVD</b>	Gradient-sintered tough substrate with excellent wear resistance – even at elevated cutting speeds. Excels at medium to high cutting speed applications, continuous cutting to moderate interruptions.
	<b>GM3215</b>	<b>PVD</b>	TiAlN Nano-Structure PVD-coated grade with exceptional balance of wear resistance and toughness. Well suited for stainless steel applications in stable conditions at medium cutting speeds.
	<b>GM3225</b>	<b>PVD</b>	Most versatile grade for stainless, with broadest working area. Optimized TiAlN PVD-coated grade, on tough, high-Co substrate. Superior performance at low to medium cutting speeds, continuous cutting to moderate interruptions.

wear resistance

toughness

**NEW!**



# STAINLESS STEEL TURNING SOLUTIONS



## Premium Performance and Unbeatable Value

**M**  
Stainless  
Steel

### Advanced Geometry Chipbreaker Designs

<b>LR</b>	<b>Roughing</b> <ul style="list-style-type: none"><li>• Unique "double-positive" chipbreaker</li><li>• Optimized chip control at larger depths of cut</li><li>• Reinforced edgeline for roughing</li><li>• Depths of cut .060" - .200"</li><li>• Feed range .006" - .020"</li></ul>	
<b>LM</b>	<b>Medium Machining</b> <ul style="list-style-type: none"><li>• Lower cutting forces with high edge sharpness</li><li>• Precision micro-edge geometry optimized for stainless steel</li><li>• Extremely broad application range</li><li>• Depths of cut .030" - .150"</li><li>• Feed range .004" - .016"</li></ul>	
<b>SF</b>	<b>Finishing</b> <ul style="list-style-type: none"><li>• Ultra-sharp cutting edge</li><li>• Smooth, free cutting action without burrs</li><li>• Excellent workpiece surface finish</li><li>• Depths of cut .004" - .060"</li><li>• Feed range .002" - .012"</li></ul>	